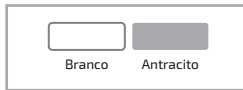
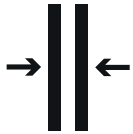


MANUAL DE MONTAGEM SYPHON FLEX

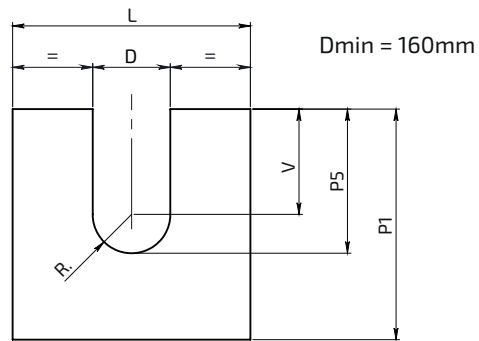
Espessura do MDF de 15 e 18mm

Alta resistência a umidade

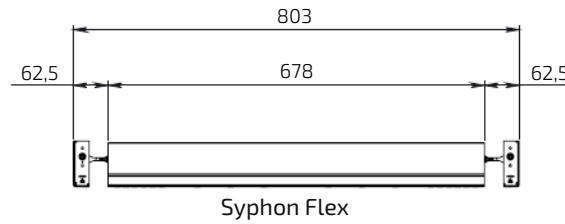
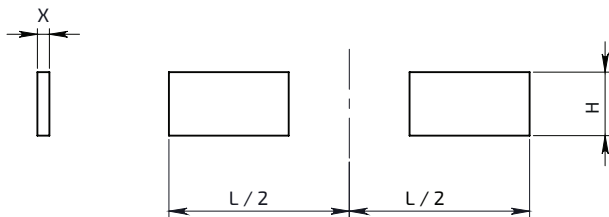
Acabamentos



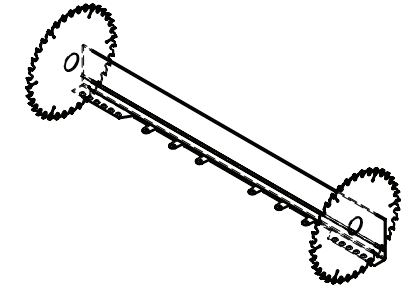
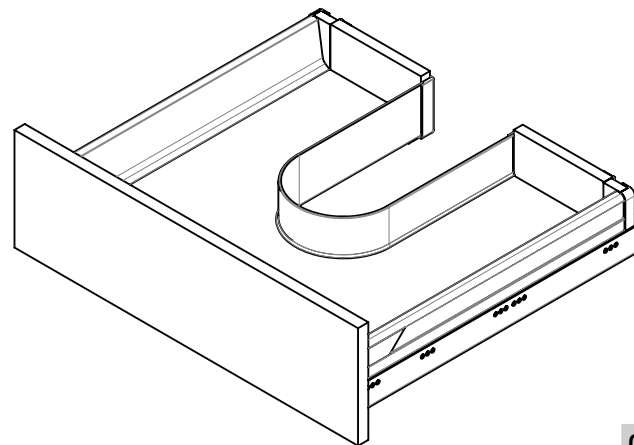
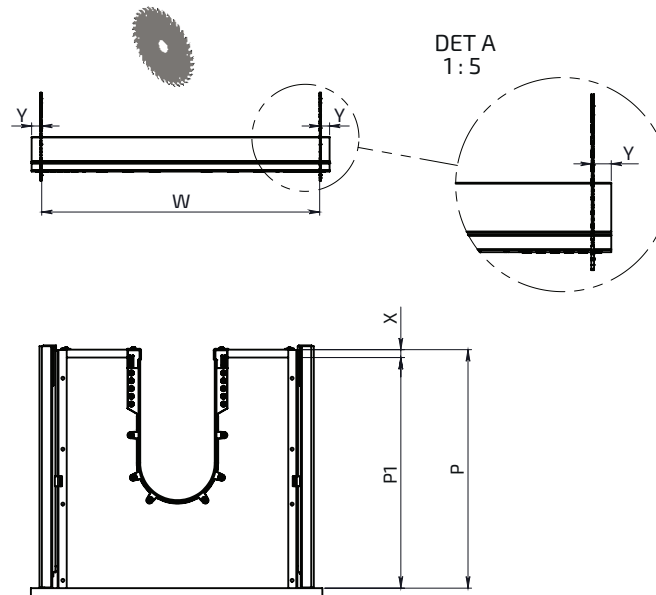
● Fundo da gaveta



● Lados da gaveta



● Corte inferior da gaveta



● Fórmula para cálculo de corte

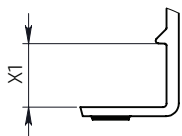
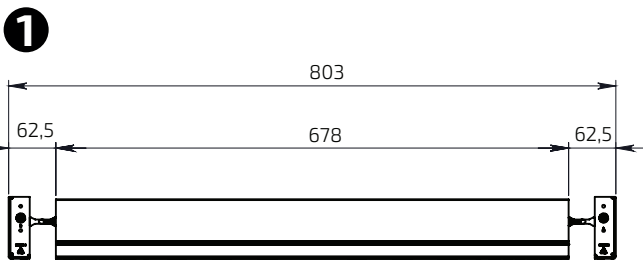
$$P1 = P - X$$

$$Y = \frac{678 - (2 \times P4) + 6,7 - (3,14 \times R)}{2}$$

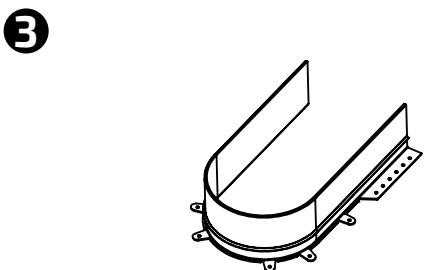
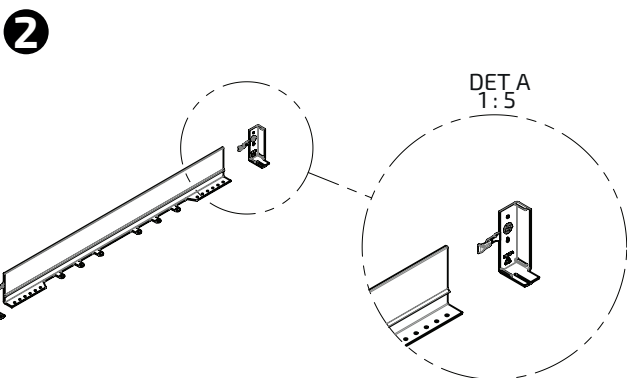
● Exemplos de cálculo de recorte com corte Syphon Flex (com tampas)

R	D	P4	P5	Y	W
80,0	160,0	200,0	280,0	16,8	646,5
85,0	170,0	190,0	275,0	18,9	642,2
90,0	180,0	180,0	270,0	21,1	637,9
95,0	190,0	170,0	265,0	23,2	633,6
100,0	200,0	160,0	260,0	25,4	629,3

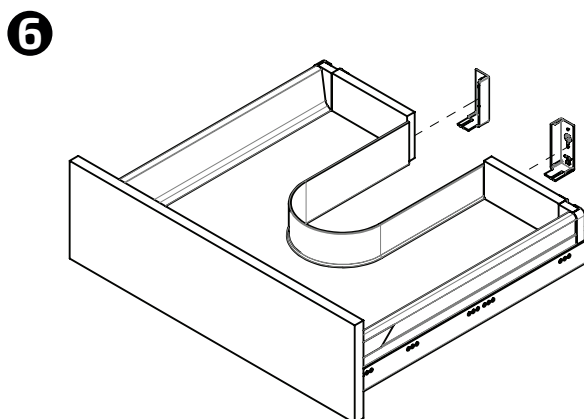
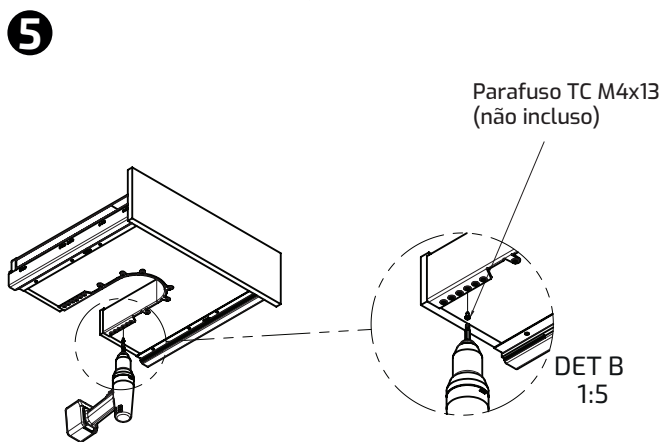
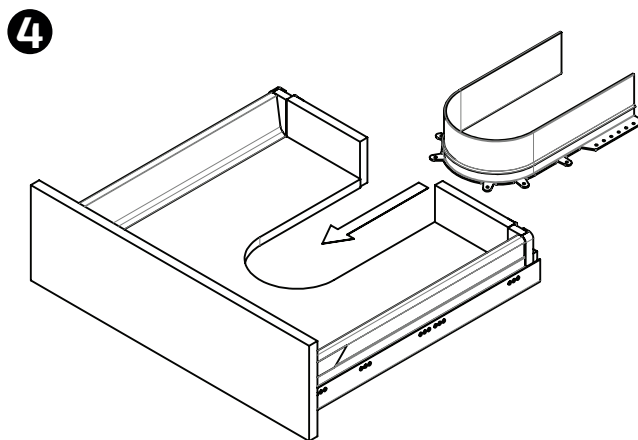
● Esquema de montagem Syphon Flex (com tampas)



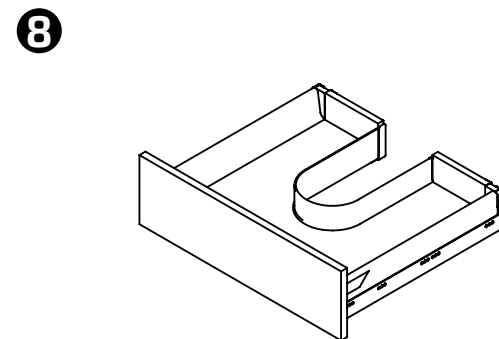
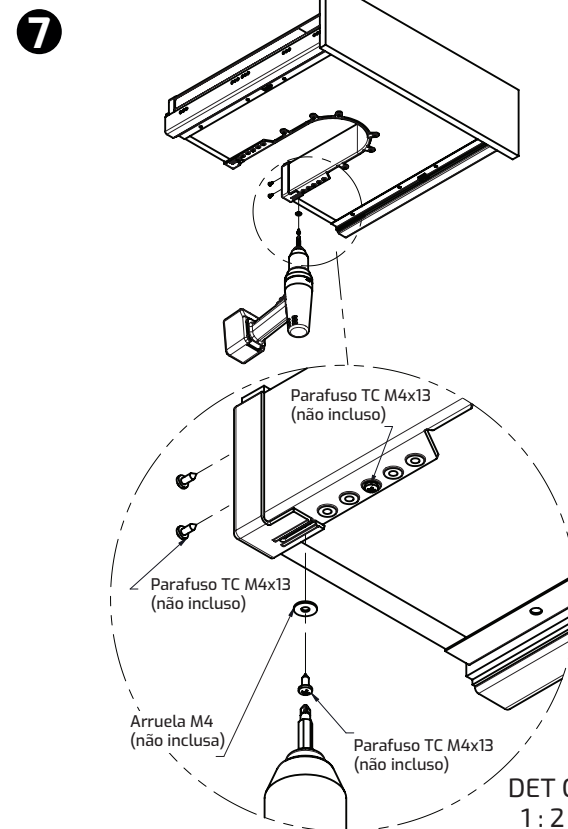
X1 = para espessuras 16 ou 18mm



04



05



06