

MANUAL DE INSTALAÇÃO

DS25



● Dados técnicos

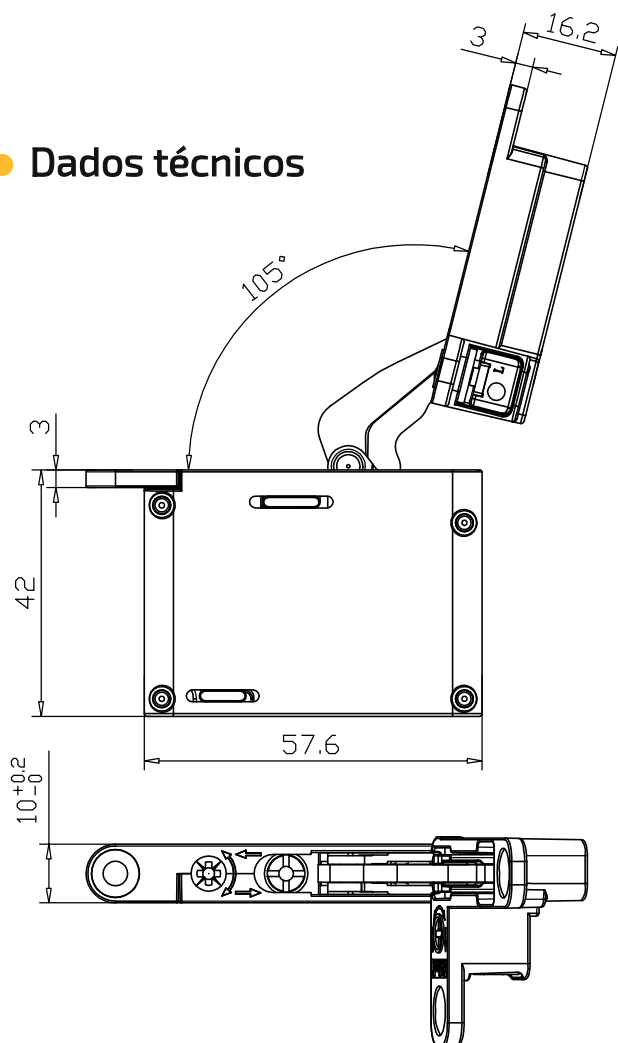


Tabela de cálculo de sobreposição

$$Z=(16.5+K)-D$$

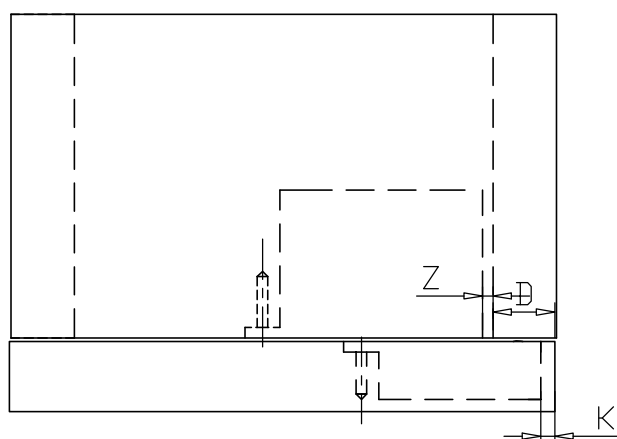
Nota: Tabela para sobreposição completa, para calcular meia sobreposição aumentar o tamanho de Z.

D \ K	3	4	5	6
Z	3	4	5	6
3	16.5	17.5	18.5	19.5
4	15.5	16.5	17.5	18.5
5	14.5	15.5	16.5	17.5

Quando o valor Z e o valor D da tabela acima correspondem simultaneamente aos dados da tabela, a placa ainda pode sofrer um ajuste lateral de +/-2 milímetros.

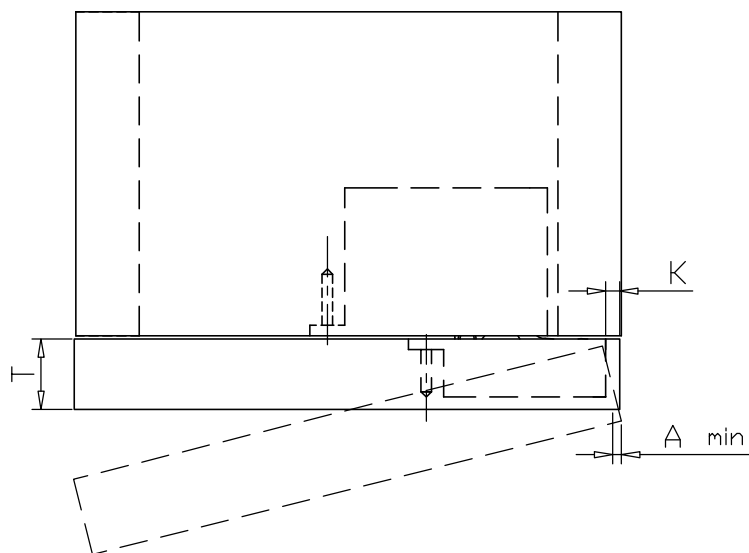
Nota:

1. Distância possível de furação na porta de madeira (K): de 4 a 8mm
2. K fixo = 4mm para portas em alumínio



● Dados técnicos

Espaço necessário para abertura da porta.



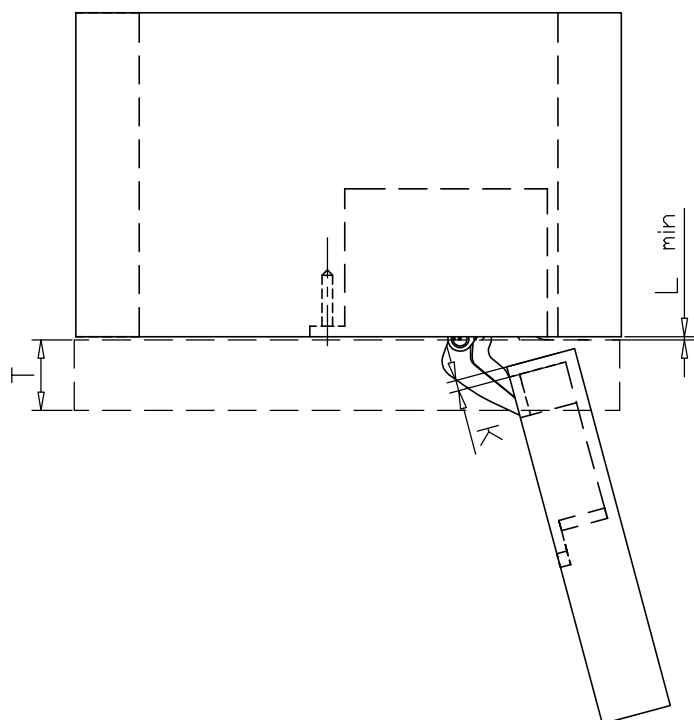
A \ T	18	20	22	24	26	28	30	32
K								
3	0	0.2	0.5	0.8	1.4	2.5	4.2	6.0
4	0	0.2	0.4	0.8	1.3	2.4	3.8	5.4
5	0	0.2	0.4	0.8	1.2	2.3	3.4	5.0
6	0	0.2	0.4	0.8	1.2	2.2	3.2	4.5

K= Distância do furo entre o painel da porta e a borda do corpo

T= Espessura da porta

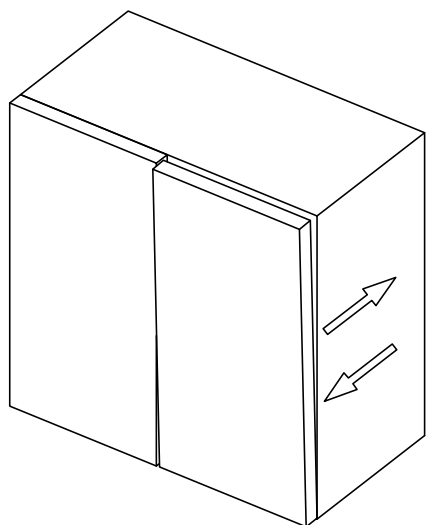
A= Folga mínima da porta para movimento

L= Espaço entre painel da porta e armário

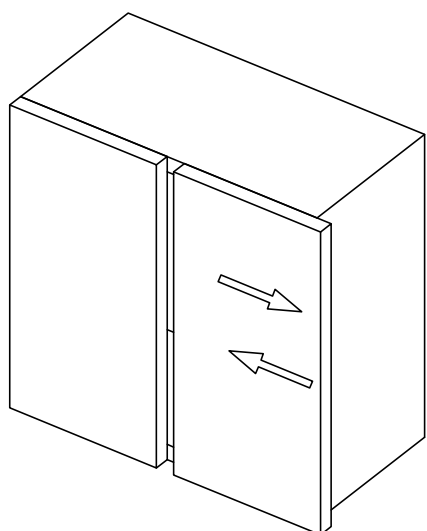
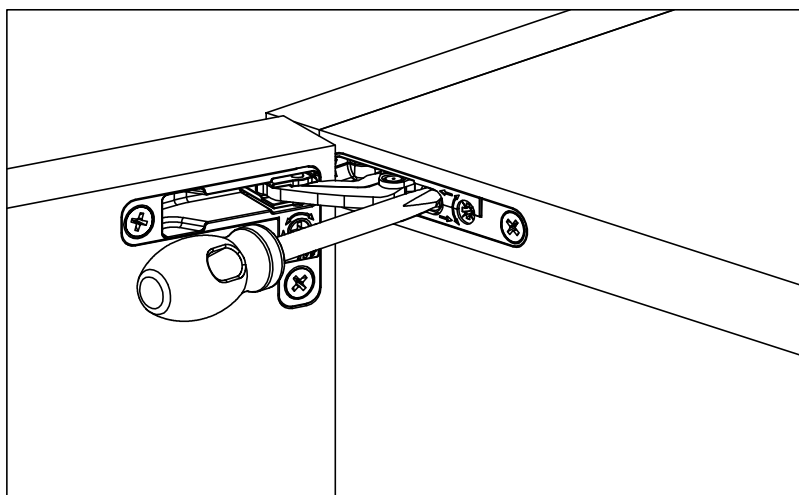


L \ T	18	20	22	24	26	28	30	32
K								
3	1.0	1.0	1.0	1.0	1.0	1.0	1.0	1.0
4	1.0	1.0	1.0	1.0	1.0	1.0	1.0	1.0
5	1.0	1.0	1.0	1.0	1.0	1.0	1.0	1.0
6	1.0	1.0	1.0	1.0	1.0	1.0	1.0	1.0

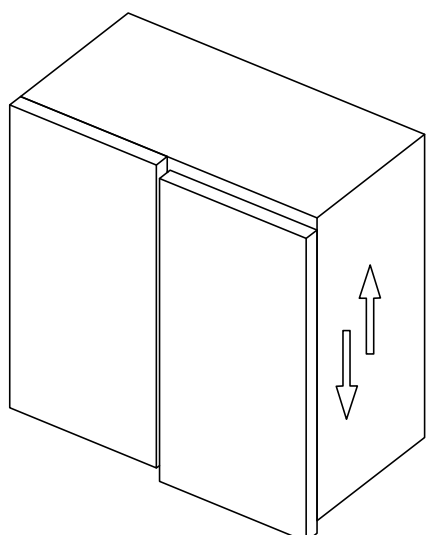
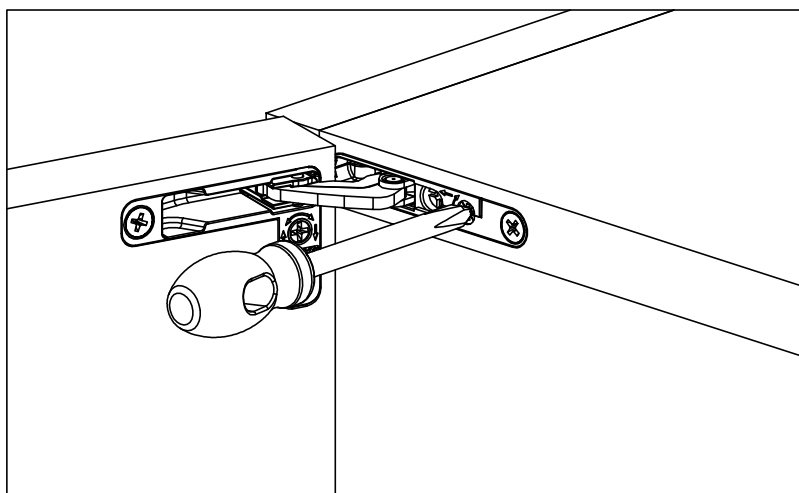
● Regulagens



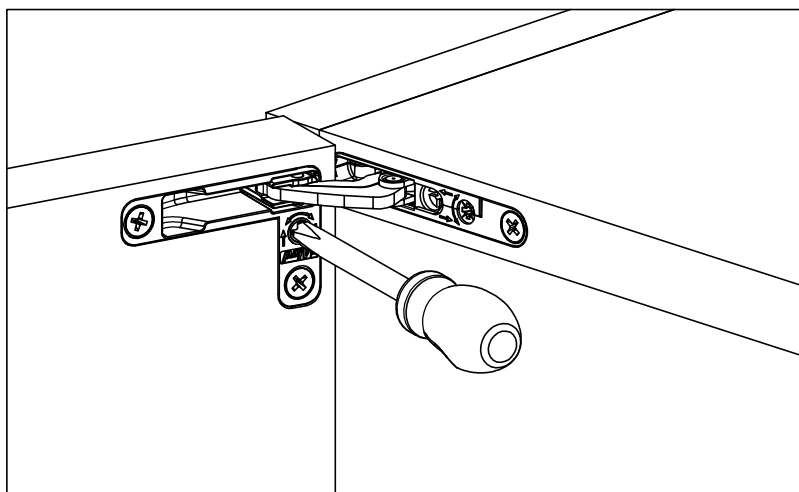
Ajuste frontal: +2.5 / - 0 mm



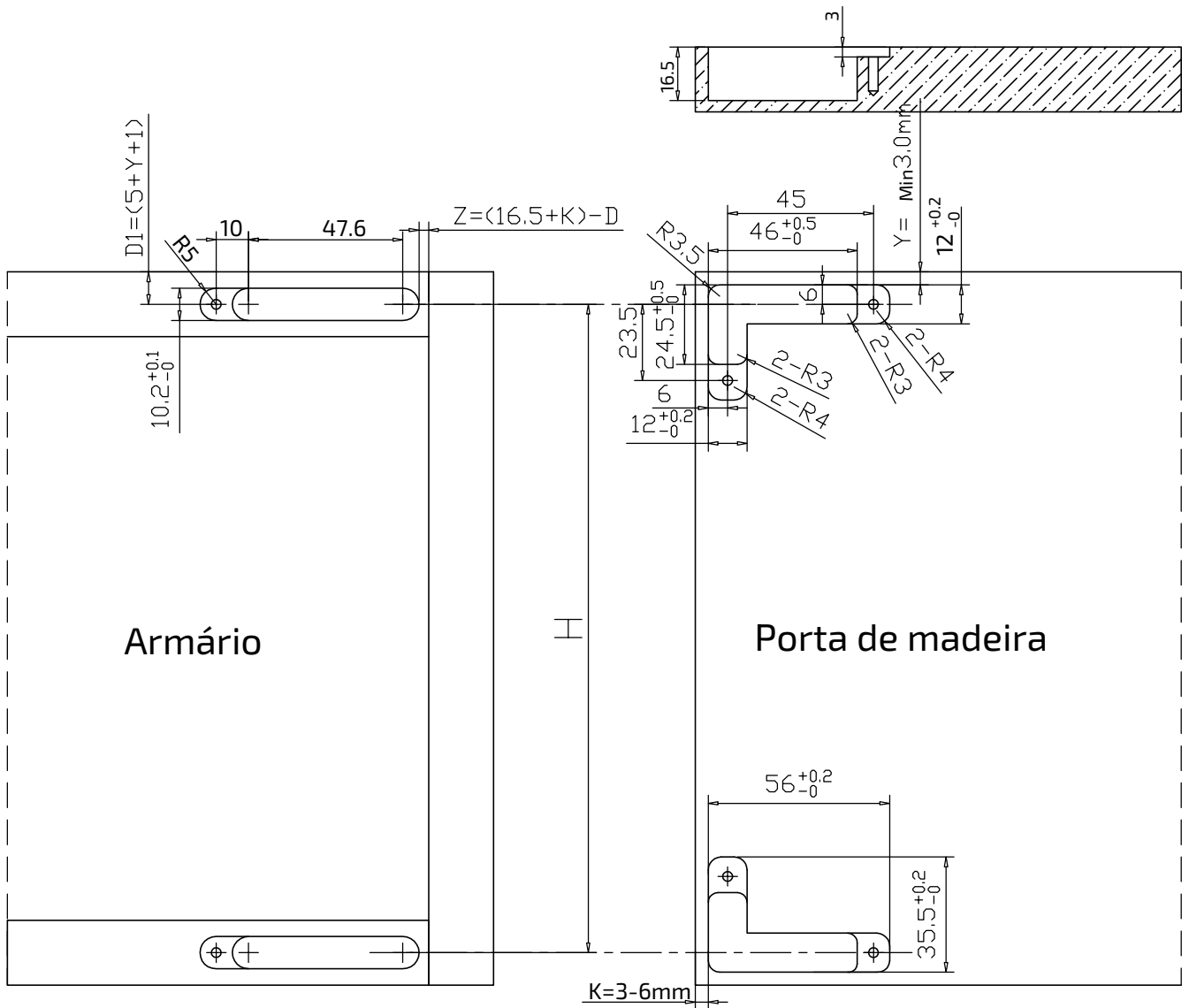
Ajuste lateral: +2.0 / - 2.0 mm



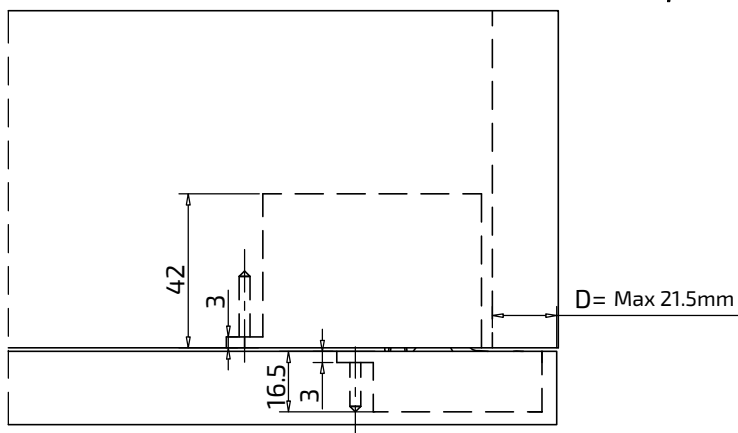
Ajuste vertical: +1.0 / - 1.0 mm



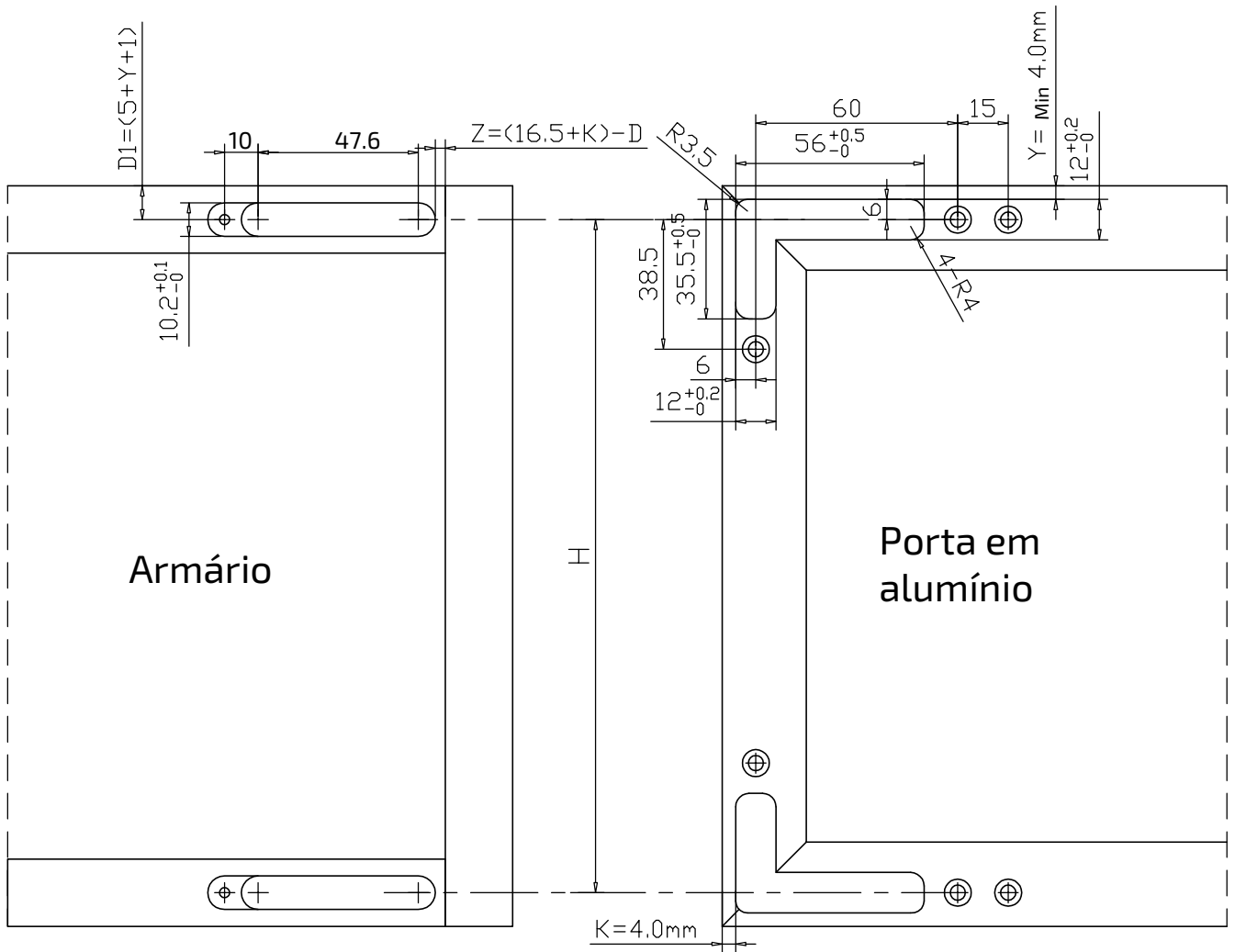
● Esquema de usinagem para porta em MDF



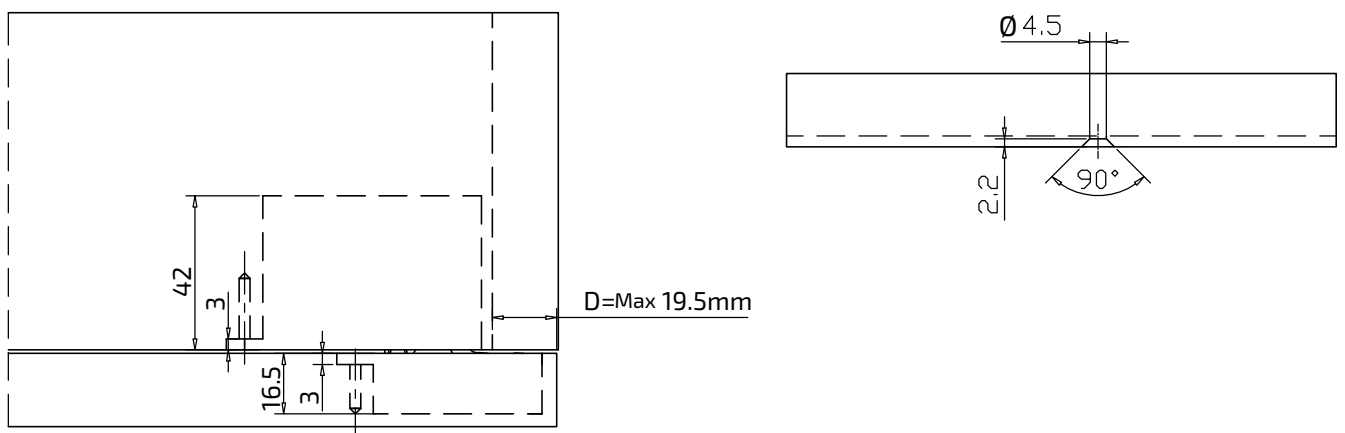
Observação: Distância possível de furação na porta (K): de 3 a 6mm para portas de madeira



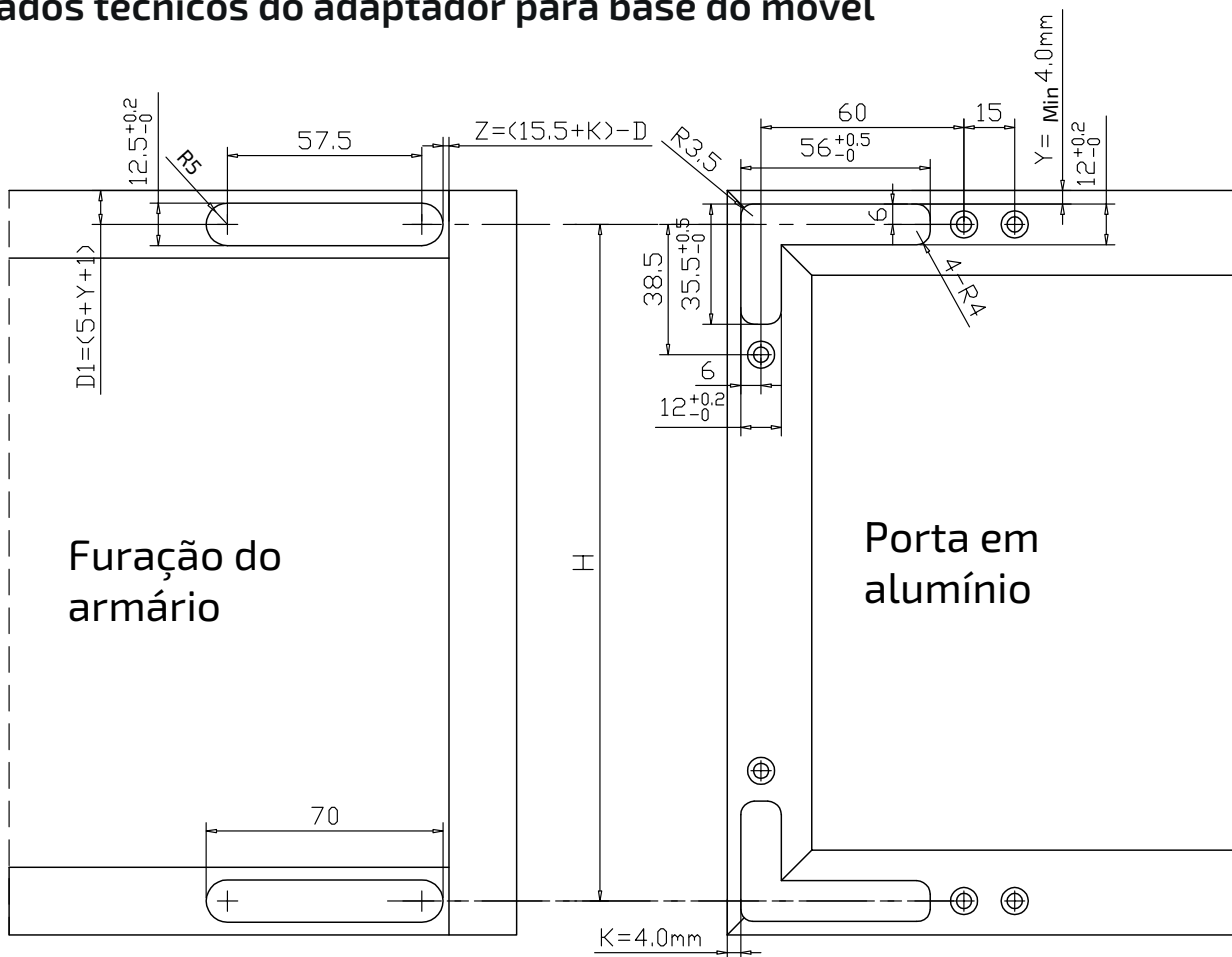
● Esquema de usinagem para porta em alumínio



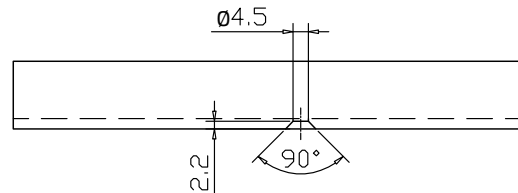
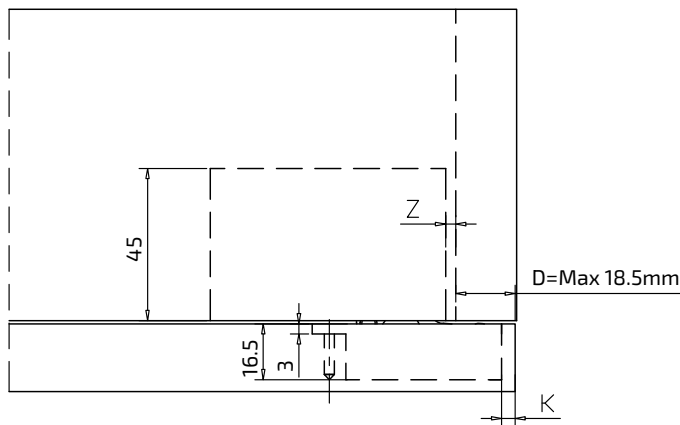
Observação: K fixo = 4mm para portas em alumínio



● Dados técnicos do adaptador para base do móvel

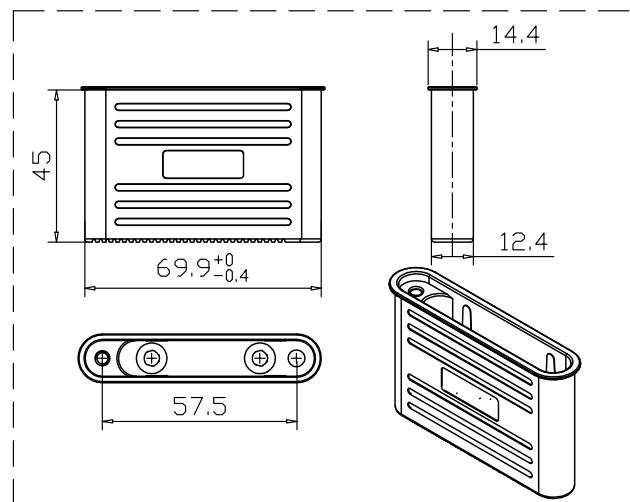


Observação: K fixo = 4mm para portas em alumínio

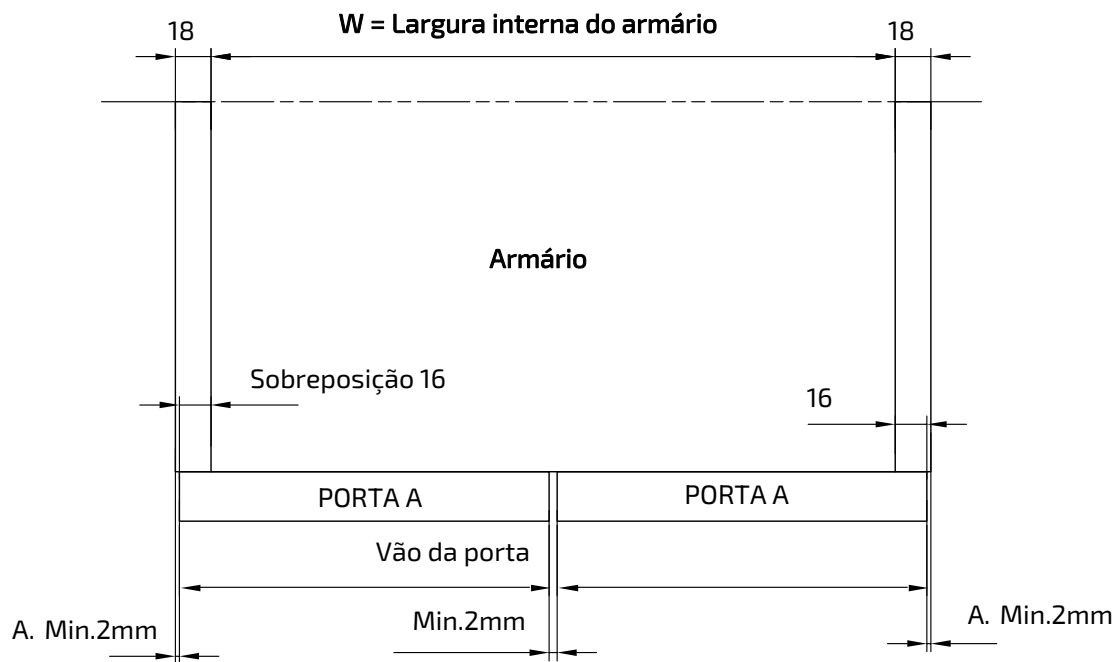


D \ K \ Z	3	4	5	6
3	15.5	16.5	17.5	18.5
4	14.5	15.5	16.5	17.5
5	13.5	14.5	15.5	16.5

Quando o valor Z e o valor D da tabela acima correspondem simultaneamente aos dados da tabela, a placa ainda pode sofrer um ajuste lateral de +/- 2 milímetros.

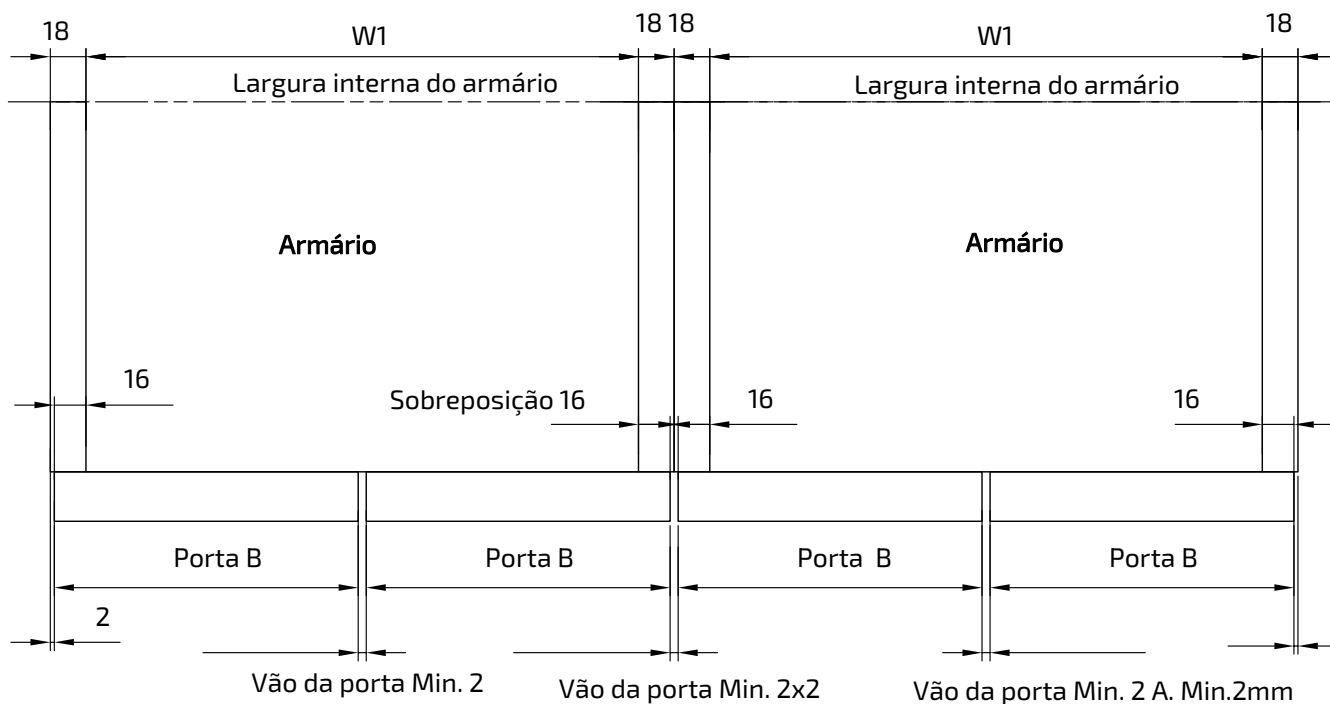


● Cálculo da largura da porta



Exemplo 1

$$\text{Porta A} = W/2 + 15\text{mm}$$



Exemplo 2

$$\text{Porta B} = W1/2 + 15\text{mm}$$